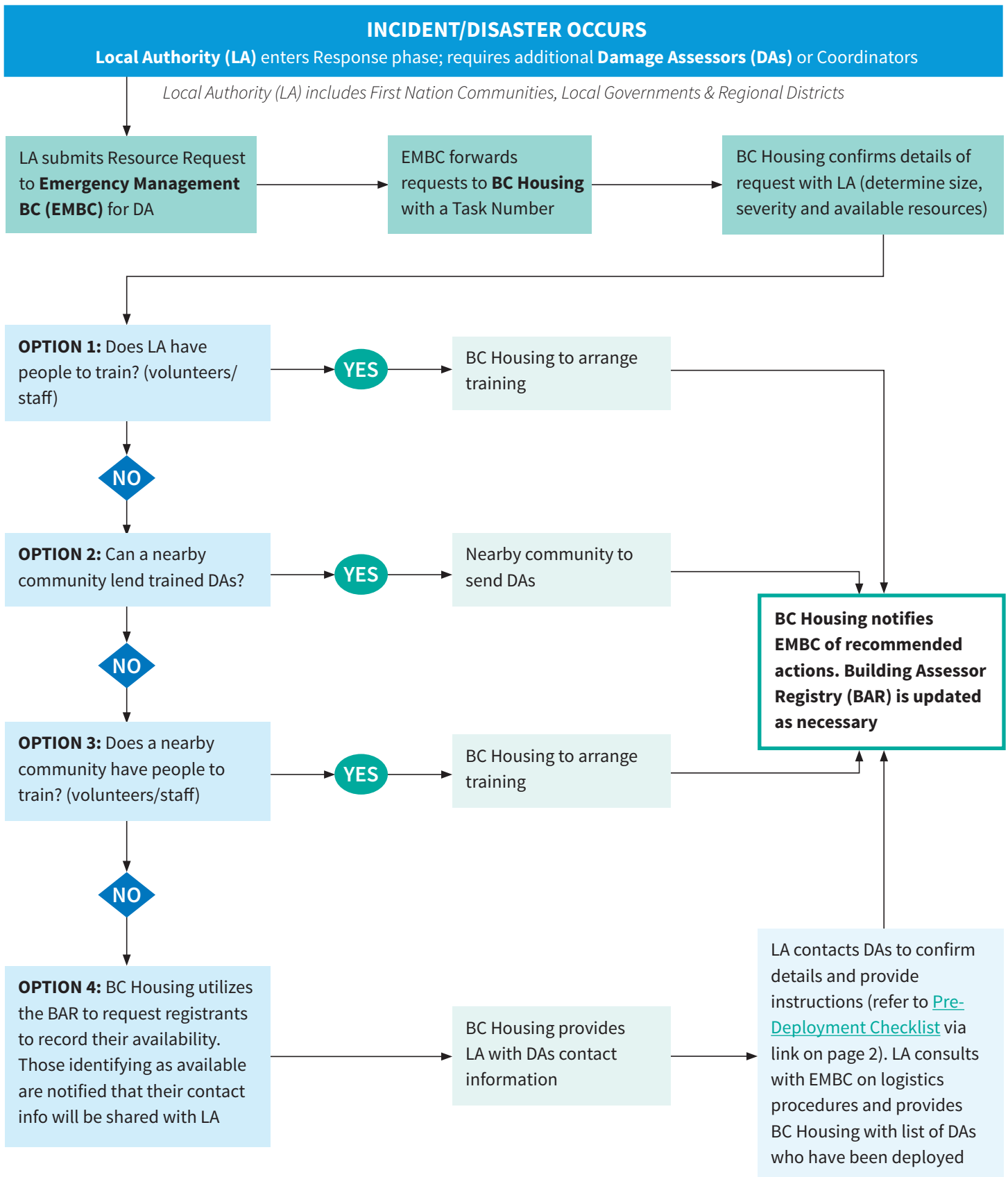


# Decision Making Process – Request for Damage Assessors



This flow chart represents the process to support a Local Authority's request for damage assessors. The decision matrix is intended to assist the Damage Assessment Branch(es) at the Local and Provincial level.

The following assumptions are made:

- ▶ An Incident Command System such as the British Columbia Emergency Management System (BCEMS) is being utilized;
- ▶ A Local Authority is responding to a recent, ongoing, or emerging disaster;
- ▶ The Local Authority has activated an Emergency Operation Centre (EOC) to support the local response;
- ▶ The Local Authority has situational awareness that some building damage has occurred that requires further rapid and/or detailed assessment;
- ▶ Additional response activities are concurrently taking place;
- ▶ The Local Authority has submitted a resource request form for damage assessment support to Emergency Management BC (EMBC) using standard forms and processes;
- ▶ The request for assessors is intended for buildings only; not bridges, towers, dams, roads, or other types of specialized construction;
- ▶ Logistics such as transportation, accommodation and meals will be arranged by the Local Authority with guidance from EMBC;
- ▶ The Local Authority is to reimburse Assessors for costs incurred for the duration of deployment.

This information is available on BC Housing's PDBA website along with other resources, information on training and program updates.

<https://www.bchousing.org/about/post-disaster-building-assessments>

- ▶ Operational Guides
- ▶ Checklists
- ▶ Position Descriptions
- ▶ Templates and Samples
- ▶ Related Links