

## POST-DISASTER BUILDING ASSESSMENTS

*There are different types of assessments to meet different needs*

AREA	RAPID	DETAILED	ENGINEER
<ul style="list-style-type: none"> <li>Also called Windshield Assessment</li> <li>Provides approximate location and extent of damage (community level)</li> <li>Completed from vehicle or aerial / drone overflight</li> </ul>	<ul style="list-style-type: none"> <li>Visual assessment for life safety issues and usability</li> <li>Informs Ops &amp; Planning</li> <li>Typically 10-30 minutes per building</li> <li>Placards posted on each building</li> </ul>	<ul style="list-style-type: none"> <li>Follow-up to Rapid assessments as required</li> <li>Requires more time and specialized knowledge</li> <li>Might expose hidden areas to assess utilities, identify specific concerns</li> </ul>	<ul style="list-style-type: none"> <li>Professional assessments</li> <li>Completed on Complex &amp; Highly Complex buildings</li> <li>May include geotechnical or other credentialed professionals</li> <li>Requires significant time</li> </ul>

### STANDARD RESPONSE GOALS

1. Safety & Health of Responders
2. Save Lives
3. Reduce Suffering
4. Protect Public Health
5. Protect Critical Infrastructure
6. Protect Property
7. Protect the Environment
8. Reduce Economic & Social Losses

### COMMON TERMINOLOGY

**Assessment Forms** – Specially designed to collect critical building information

**BAR** – [Building Assessor Registry](#) – A BC Housing managed database of damage assessor volunteers

**CDA** – [Coordination](#) of Damage Assessment

**Mutual Aid** - Agreement between agencies/jurisdictions to assist one another by providing resources

**PDBA - Post-Disaster Building Assessment** - A framework for different types of assessments and [Guidelines for Community](#) level planning and response

**Placard** – Official notice of assessment and outcome posted on each building upon assessment

**EOC - Emergency Operations Centre** – A designated facility for the local authority to coordinate the overall response and support

### RESOURCE REQUESTS

- BC Housing can provide Just-in-Time [training](#) to local authority
- Utilize Mutual Aid agreements
- Contact PREOC for regional support
- Building Assessor Registry can be accessed for out of region support

### BRIEFING CHECKLIST

1. Overall status of event
2. Safety Concerns & Actions
3. Priorities and Assignments
4. Contact Information & Reporting
5. [Equipment](#) Familiarization
6. Review of Assessment Criteria
7. Meals and other logistics

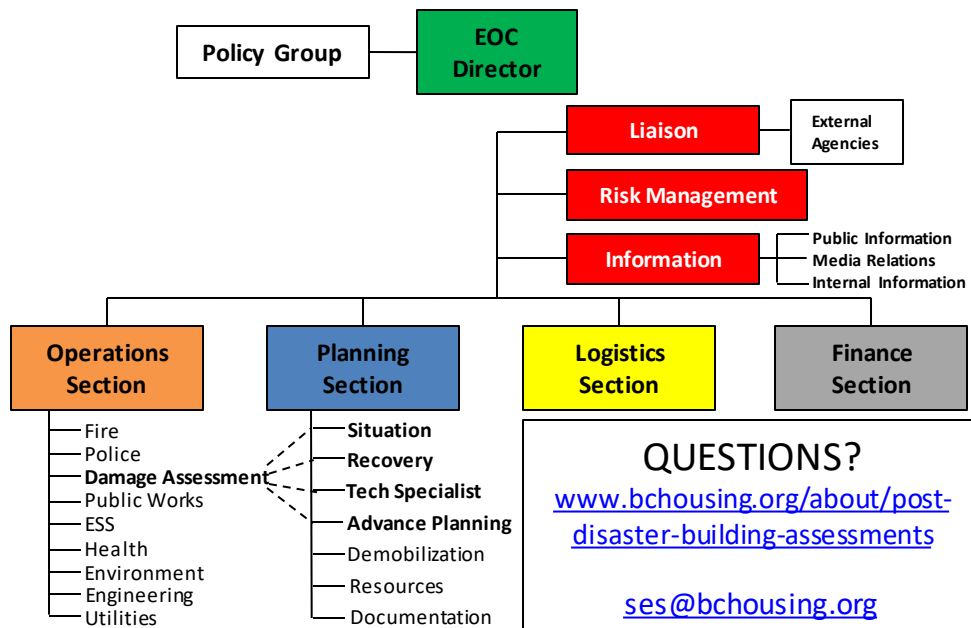
### TEAM COMPOSITION

- Minimum 2, Maximum 4 per team
- Blend skills levels and expertise
- Local area guides recommended for out of region teams
- Include others as necessary (geotech, ESS, translator, SAR, 1<sup>st</sup> aid, etc.)

### DEBRIEFING CHECKLIST

1. Review of day's activities
2. Summary of findings
3. Feedback on Assessments
4. Ask for issues or concerns
5. Collect information to pass along
6. Preview for next day
7. Reminder of [Worker Care](#)

## EOC ORGANIZATIONAL STRUCTURE



### QUESTIONS?

[www.bchousing.org/about/post-disaster-building-assessments](http://www.bchousing.org/about/post-disaster-building-assessments)

[ses@bchousing.org](mailto:ses@bchousing.org)

# Rapid Damage Assessment (RDA) Quick Reference Guide - Response

## PLACARDS

**INSPECTED** (green) – NO RESTRICTION OF USE OR OCCUPANCY: No apparent structure or safety hazard was observed that would restrict use or occupancy

**RESTRICTED USE** (yellow) – MAY BE USED WITH RESTRICTIONS: Structure has been found to be damaged limiting use or occupancy

**UNSAFE** (red) – DO NOT ENTER OR OCCUPY (NOT A DEMOLITION ORDER): Structure has been seriously damaged or unsafe to use

## BUILDING TYPOLOGY

- **Non-Complex** typical single-family homes, townhomes, and multi-residential buildings no taller than 4 stories. This also includes small retail/commercial and light industrial
- **Complex** buildings taller than 4 stories, irregular design, some geotechnical risk, and larger retail/commercial industrial ex. shopping centres, care homes, etc.
- **Highly Complex** buildings that are 8 or more stories, constructed of engineered materials, represent a high geotechnical risk. Examples may include airport terminals, hospitals, and large high-rises

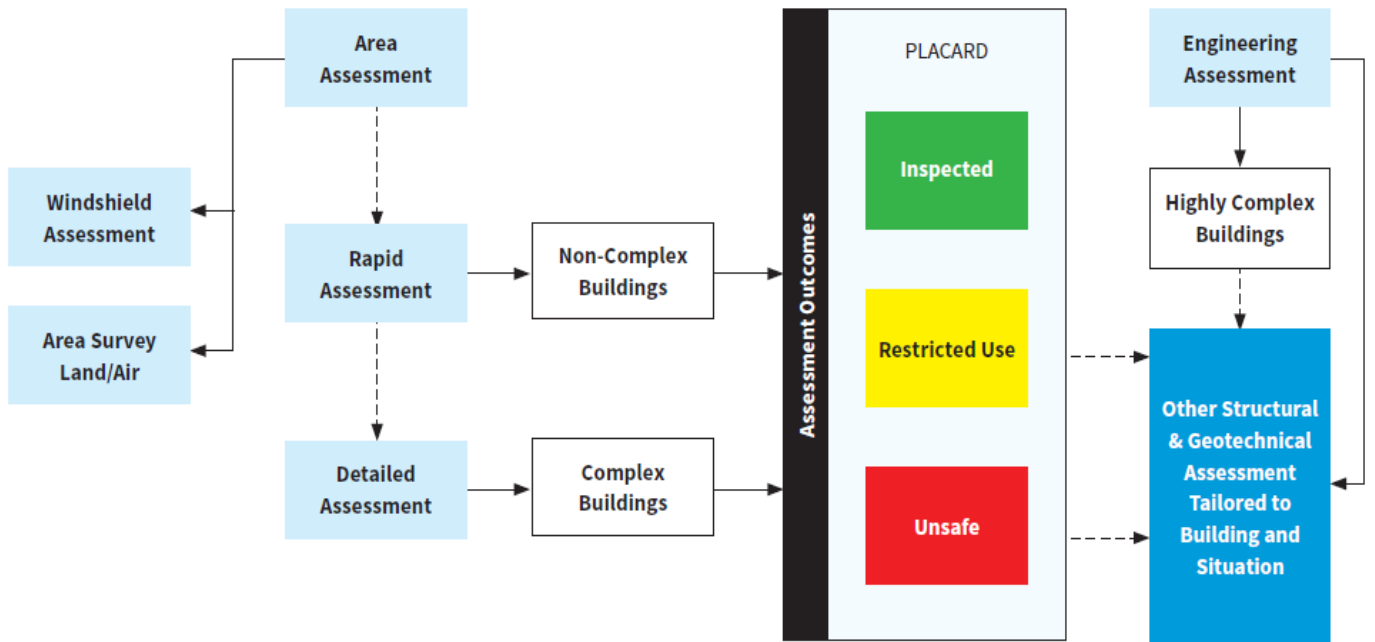
## RDA RESPONSIBILITIES

### Damage Assessment Coordinator

- Scheduling and identifying needs for Post-Disaster Building Assessors
- Deployment, safety and authority of Post-Disaster Building Assessors
- Flow of information with Assessors, within EOC, and between agencies
- Planning, collating and display of assessments and maps

### Damage Assessors

- Conducting Assessments safely and as assigned by the Coordinator
- Communicate with PDBA team members, Coordinator & Occupants



## KEY PUBLIC MESSAGING

- The local authority has conducted rapid damage assessments on buildings to identify life safety risks that would prevent or restrict occupancy
- Red and Yellow placards can only be removed by those authorized by the local authority
- Please monitor local news and social media for updates

## RDA MOBILE APP

- Available on Apple and Android devices
- Uses publicly available property data
- Captures the same information as the Assessment Form
- Allows the Coordinator to see real time updates from assessment teams
- Allows for photos of each assessment
- Collector for ArcGIS App can be used in conjunction with the [Common Operating Picture Dashboard](#) (contact your PREOC for access) and the [RDA Portal](#) (contact BC Housing for access)

## REMOVING PLACARDS

- **INSPECTED** (green) placards can be removed by the building owner or occupants of the building
- **RESTRICTED USE** (yellow) placards may be taken down by a licensed contractor or as directed by the local authority
- **UNSAFE** (red) placards may only be taken down by the local authority
- **\*Buildings should be re-assessed after conditions change (ex. an aftershock, geotech failure, etc.)**